

## ABOUT OUR CLASSES

**Communicative Health Care Associates** is pleased to offer a range of American Sign Language (ASL) classes for adults and children who want to learn this important and interesting language. Classes are conducted in ASL and taught by hearing and deaf instructors.

### LEVELS AVAILABLE

Beginners 1, 2, 3

Intermediate 1, 2, 3

Advanced

Selected classes offered each semester.

Private lessons (all levels) also available.

Contact us for more information on home or on-site services.

### WINTER 2019 SCHEDULE

10-week program. Each class is 1½ hour

### CLASS DATES

Start Monday, January 7, 2019

Beginners I - 6:00-7:30pm

Beginners II - 7:30-9:00pm

### COURSE FEE \$235 per person

Based on a class size of 5 or more.

Sign up with a friend and receive a

\$10 discount when you both sign-up for a class during the same semester.

Full payment is required before the first class. To ensure continuity of our courses, there are no refunds after the first week.

## COURSE NOTES



### CLASS SIZE

Classes are limited to a maximum of 12 students to allow for personal attention.

Classes are subject to student enrollment.

### CONVENIENT LOCATION

Classes are held at our office which is easily accessible by Route 128 or the MBTA bus #70.

### Driving Directions

From Route 128, take exit 26E to the intersection of Main Street. We are located at the corner of Main Street and Prospect Hill Ave. Enter through the door on Prospect Hill Ave.

### WEATHER CANCELLATIONS

If there is inclement weather on the day of class, a decision will be made by 4 p.m. if class will be cancelled. Our office will call or leave a voice message for students, but it is the student's responsibility to call the office if there are any questions.

### For More Information

Please contact us at:

Communicative Health Care Associates

Allied Rehabilitation Associates

977 Main Street

Waltham, MA 02451

Tel: 781-899-4709 Fax: 781-899-4788

info@CommunicativeHealthCare.com

[www.CommunicativeHealthCare.com](http://www.CommunicativeHealthCare.com)

*We welcome your inquiries.*

## REGISTRATION FORM

**Pre-registration is required.**

Name \_\_\_\_\_

Address \_\_\_\_\_  
\_\_\_\_\_

Work Tel. (\_\_\_\_) \_\_\_\_\_

Home/Cell Tel. (\_\_\_\_) \_\_\_\_\_

Email \_\_\_\_\_

**How did you hear about this class?**

(If online, which site?)

CLASS	DAY & TIME	Select
Beginners I	Jan 7, 6:00-7:30pm	
Beginners II	Jan 7, 7:30-9:00pm	
Beginner III	TBD	
Intermediate	TBD	

**Course fee:** \$235/person course fee.

Friend's Name (for \$10 discount)

Your Signature \_\_\_\_\_

Amount Enclosed \_\_\_\_\_

Cash \_\_\_ Check# \_\_\_

This is your contract with Communicative Health Care Associates, Inc. for ASL classes.

**Please remit payment prior to class to:**

Communicative Health Care Associates

977 Main Street

Waltham, MA 02451

(Office use: Received by \_\_\_\_\_ Date \_\_\_\_\_)

## ABOUT US

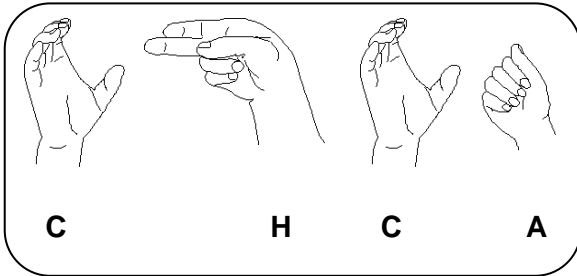
---

### Communicative Health Care Associates

(CHCA) is an independently owned private practice providing multi-disciplinary diagnostic evaluations and therapy for children, adolescents, adults, and seniors.

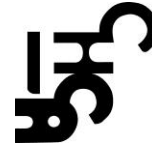
**We provide services** to private and public schools, Head Start, Early Intervention, health care facilities, assisted and independent living, businesses, and individuals.

**For more than 40 years**, we have been helping individuals improve their lives through better communication, and greater mobility through our Allied Rehabilitation Associates division.



[www.CommunicativeHealthCare.com](http://www.CommunicativeHealthCare.com)

**SIGN UP WITH A FRIEND.  
SAVE \$10.**



Communicative Health Care Associates, Inc.  
Allied Rehabilitation Associates  
977 Main Street  
Waltham, MA 02451

## Communicative Health Care Associates

---

# American Sign Language (ASL)



**Register Now for  
WINTER 2019  
Classes**